

# ETERNAL SUN VALUE CREATOR

Consort Solar Co.,Ltd.



## CHINA

MANUFACTURING BASE  
CONOSRT SOLAR CO.,LTD

📍 Factory Address: No.5, Zhiyuan Road, Yuqi Street, Huishan Zone,  
Wuxi, Jiangsu, P.R.China  
✉ E-mail: [sales@consortsolar.com](mailto:sales@consortsolar.com)

## SINGAPORE

GLOBAL OPERATIONS CENTER  
CONSORT HOLDING(SINGAPORE) PTE.LTD

📍 ADD: 2 Venture Drive # 11-31 Vision Exchange,  
Singapore (608526)  
✉ E-mail: [singapore@consortsolar.com](mailto:singapore@consortsolar.com)

## BENGAL

BRANCH COMPANY  
CONSORT POWER BANGLADESH LTD

📍 ADD: Plot-106,Block-a,Chiriakhana Road,  
Dhaka,Bangladeh  
✉ E-mail: [bengal@consortsolar.com](mailto:bengal@consortsolar.com)

## AMERICA

BRANCH COMPANY  
COSORT SOLAR CO.,LTD

📍 ADD: 100 N Howard St Ster,Spokane,Wa,  
99201,United States  
✉ E-mail: [usa@consortsolar.com](mailto:usa@consortsolar.com)

## GERMANY

BRANCH COMPANY  
CONSORT SOLAR GMBH

📍 ADD: Lindenstr. 48-52, 40233 Düsseldorf  
✉ E-mail: [germany@consortsolar.com](mailto:germany@consortsolar.com)

## JAPAN

BRANCH COMPANY  
CONSORT SOLAR JAPAN CO.,LTD

📍 ADD: 622 City Tower Gunza Higashi,  
2-11-1 Minato,Chu-ku,Tokyo 104-0043  
✉ E-mail: [cst-jp@consortsolar.com](mailto:cst-jp@consortsolar.com)

## KOREA

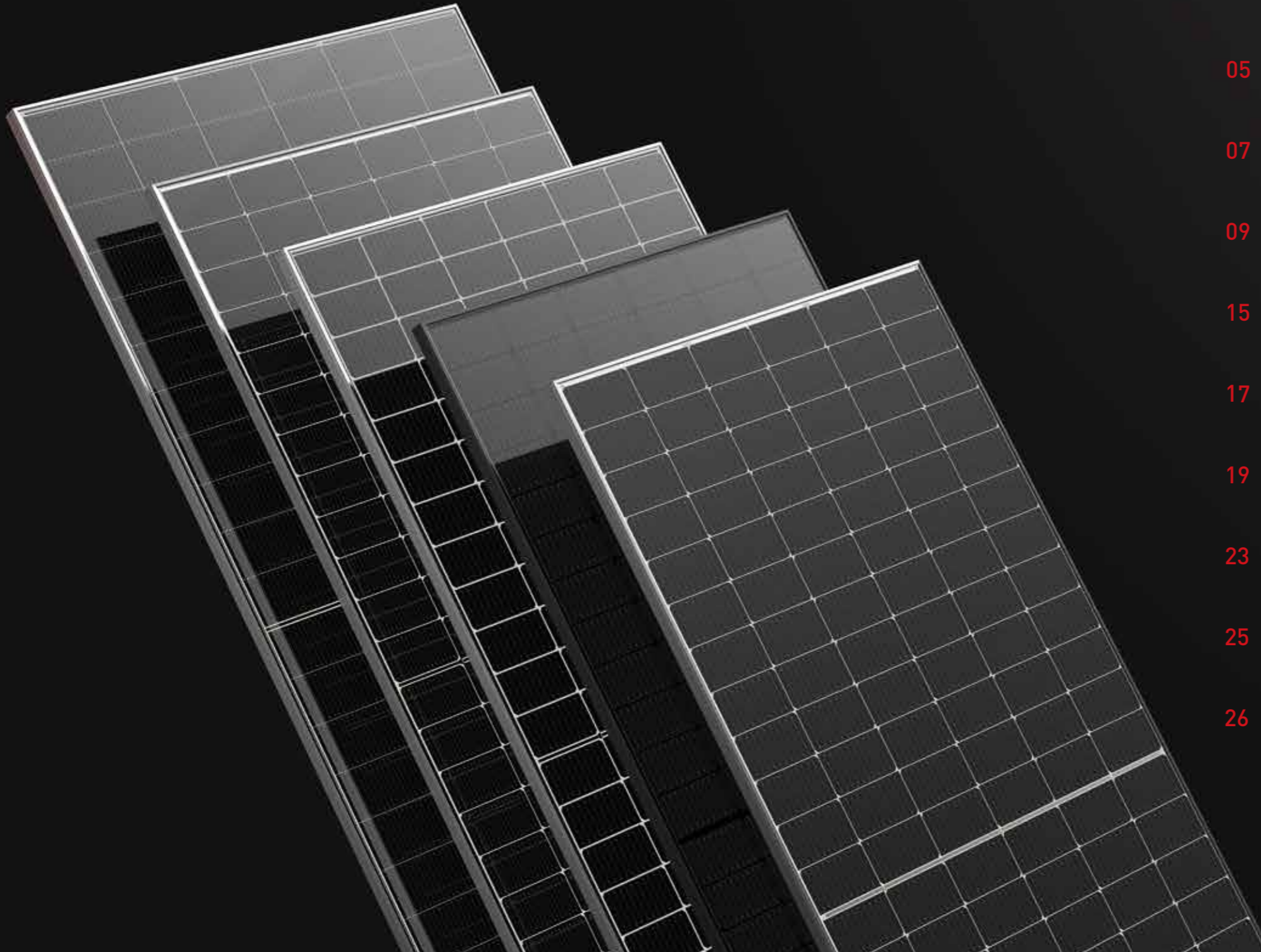
BRANCH COMPANY  
COSORT SOLAR CO.,LTD

📍 ADD: 906, 51-9, Dongtancheomdansaneop 1-ro,  
Hwaseong-si, Gyeonggi-do, Republic of Korea  
✉ E-mail: [korea@consortsolar.com](mailto:korea@consortsolar.com)

“ Put our customer first,  
powering a more sustainable future.

# CATALOGUE

01	CORPORATE STRENGTH
03	CORPORATE PHILOSOPHY
05	DEVELOPMENT HISTORY
07	MANAGEMENT TEAM
09	MAIN PRODUCT
15	MANUFACTURING
17	QUALITY
19	SUCCESSFUL PROJECTS
23	STRATEGIC COOPERATION
25	GLOBAL PARTNERS
26	FUTURE



# CORPORATE STRENGTH



Founded in 2016, Consort Solar Co., Ltd specializes in the research and development, manufacturing, and marketing of high-efficiency solar cells, photovoltaic (PV) modules, and system integration. With a track record of installing and operating over 500MW of solar projects globally, we have delivered over 1GW in 2022. We have a full capacity of 3GW, including 200MW off-grid, 800MW conventional PERC, 1GW TOPCon, and 1GW HJT. Our branch offices and representatives are located in the USA, Germany, and Japan, with global operation center in Singapore, third country manufacturing base in Bangladesh, and we have exported to over 100 partners worldwide. Our annual sales growth rate exceeds 100%. In line with the global trend of carbon neutrality, Consort Solar is committed to providing innovative products and superior services to all our customers.

**2016**

Consort Solar  
Founded in 2016

**500MW+**

Consort has installed and operated  
more than 500MW of solar projects worldwide

**1GW+**

By 2022, Consort projects have  
achieved a cumulative capacity of over 1GW

**3GW**

Consort have 3GW of full  
capacity by 2023

# CORPORATE PHILOSOPHY

## MISSION

*Put our customer first,  
powering a more sustainable future*

## VISION

*Spread the value of sunlight  
all over the world*

# DEVELOPMENT HISTORY

**2016**

Company founded

**2017**

Introduced the 1st 200 MW Automatic line of customized module  
TUV certification qualified

**2018**

Leading supplier in Bangladesh and Africa market  
Golden supplier awarded by Ali-baba

**2019**

Capacity increased to 500MW  
Set up Singapore operation center

**2020**

Capacity increased to 1GW  
Set up third country manufacturing base in Bangladesh

**2021**

Joint-venture with GCL System Integration Technology Co., Ltd. for china residential rooftop application

**2022**

- Registration capital increased to 15 Million USD
- Acquired full range of certification with CE,TUV,INMETRO,MCS,CQC,RETIE
- 2 GW capacity new factory planned in Wuxi Huishan area,focusing on N Type high efficiency solar modules

**2023**

Warehouse set up in Europe  
Energy storage system launching

2016 - FUTURE

# MANAGEMENT TEAM



## DR. ZHENGRONG SHI

FOUNDER & CTO

*Dr. Zhengrong Shi, PHD of the UNSW in Australia, is a distinguished leader in the photovoltaic industry in China. He is also an academician of the National Academy of Science and Engineering Technology in Australia. In the year 2000, Dr. Shi returned to China and established Wuxi Suntech Power Co., LTD. With his visionary leadership, the company grew rapidly and was listed on the NYSE in 2005, marking a significant milestone in the company's history. Dr. Shi also served as the first president of the Asia Pacific Photovoltaic Industry Association (APVIA), where he made significant contributions to the development of the industry. His exceptional leadership and innovative ideas have made him a respected figure in the field of solar energy.*



## TONY TAO PARTNER & CHAIRMAN OF THE BOARD

**Personal profile:**

*Chengdu University of Technology (CDUT) EMBA of Tsinghua University. Over 17 years experience in solar industry. Focusing on the company strategy planning and supply chain management as well as the project developing in China.*

**Past experiences:**

*Strategy purchase manager of Suntech Power Since 2005.  
Head of supply chain of Jinko solar Since 2010.  
Supply chain director of Hareon Solar Since 2011.*



## CECIL SHI PARTNER & EXECUTIVE VICE PRESIDENT

**Personal profile:**

*Jiangnan University EMBA of Tsinghua University. Engaged in solar industry for more than 15 years, rich experience in overseas business development. Strong overseas strategic layout and management capabilities. Focusing on marketing and sales for international market.*

**Past experiences:**

*Overseas sales manager of Suntech Power Since 2006.  
Account manager of Suntech Australia Sydney Branch Since 2010.  
Regional director- APMEA AREA of Suntech Power Since 2012.*

# MAIN PRODUCT

CONVENTIONAL PERC

## MONOFACIAL

Conventional Module



MULTIPLE BUSBARS (MBB)



BETTER LIGHT TRAPPING AND CURRENT COLLECTION



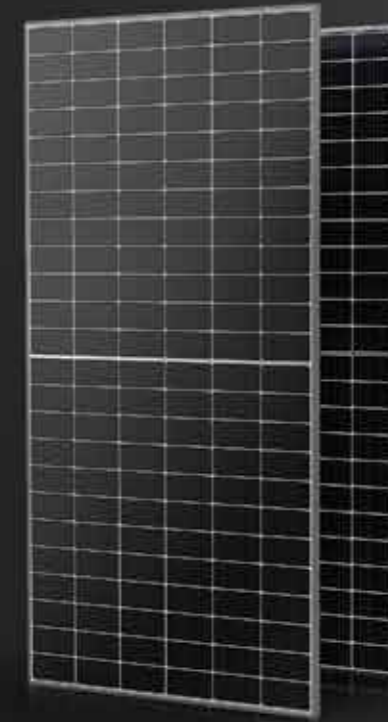
PID RESISTANCE



OPTIMIZED ELECTRICAL DESIGN



ENHANCED MECHANICAL LOAD



## BIFACIAL

Conventional Module



MORE POWER



NON-DESTRUCTIVE CUTTING



ADDITIONAL POWER GENERATION GAIN



DURABILITY AGAINST EXTREME ENVIRONMENTAL CONDITIONS

## FULL BLACK

Conventional Module



SUPER SAFETY AND RELIABILITY



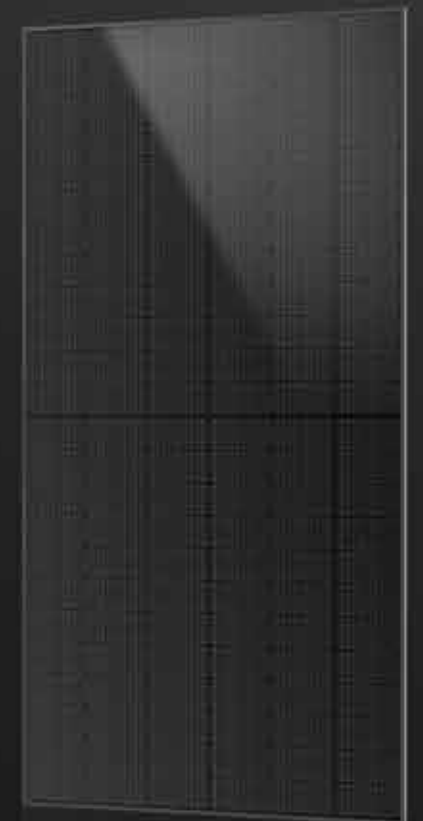
BEAUTIFUL APPEARANCE



LOW HOT SPOT RISK



LOW SYSTEM COST



# MAIN PRODUCT

N-TYPE

## HJT



HALF-CUT CELL  
TECHNOLOGY



SUPERIOR  
POWER



NO BO-LID



LOW TEMPERATURE  
COEFFICIENT



LEADING  
WARRANTY



LOW TEMPERATURE  
WELDING

## TOPCon



SMBB  
TECHNOLOGY



HIGH TEMPERATURE  
POWER GENERATION  
PERFORMANCE



BETTER  
TEMPERATURE  
COEFFICIENT



PID  
RESISTANCE



HIGHER  
POWER

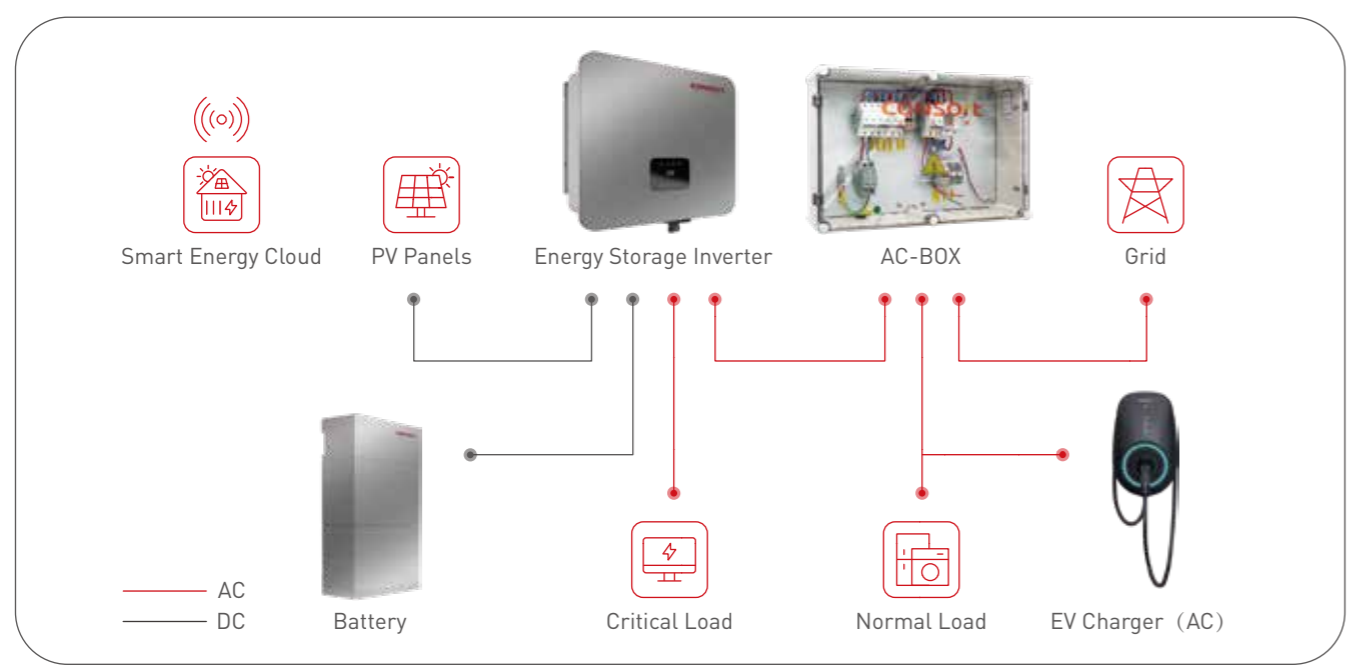


EXCELLENT  
RELIABILITY

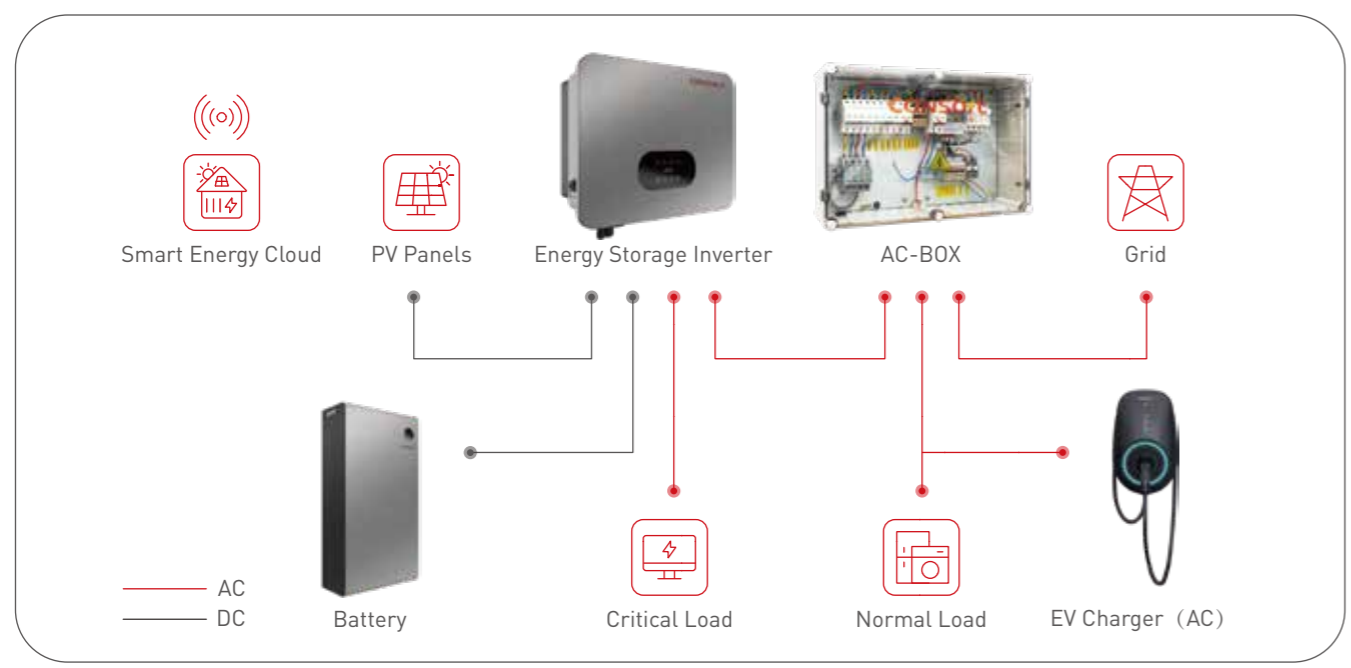


# PHOTOVOLTAIC PHOTOTHERMAL INTEGRATED MODULE

## SINGLE PHASE ESS SOLUTION SCHEMATIC DIAGRAM



## THREE PHASE ESS SOLUTION SCHEMATIC DIAGRAM



## HOW TO DEFINE OPTICAL STORAGE AND CHARGING?

The "optical storage and charging" integrated charging station is called "photovoltaic+energy storage+charging", integrating multiple technologies such as photovoltaic power generation, large capacity energy storage batteries, and intelligent charging piles, combining photovoltaic power generation through energy storage systems with charging piles.



## FEATURES:

- The photovoltaic energy storage and charging system can alleviate the pressure on the power grid, and the system itself produces no environmental or noise pollution during power generation, realizing the utilization of clean energy.
- By implementing the system for peak shaving and valley filling, the fluctuations in charging load can be smoothed out, reducing the pressure on the power grid capacity and improving the reliability of power supply.



# MANUFACTURING



• Consort Solar currently operates three manufacturing bases. It includes 2GW of N-Type capacity in its Wuxi factory in China, 200MW of off-grid capacity and 400MW of PERC capacity in its Anhui factory in China, 400MW of PERC capacity in Bangladesh. The new factory in Wuxi is dedicated to the R&D of N-Type solar module, features cutting-edge TOPCon and HJT module production lines. Overall, Consort Solar is committed to maintaining the ability to provide customers with the most technologically advanced products through advanced manufacturing capabilities and continuous research and development efforts. Providing customers with the most efficient products with a cost-effective investment cycle, and allowing each customer to reduce costs and increase efficiencies as much as possible.



• Leveraging high efficiency and high flexibility modular automatic production lines. Consort strives to shorten the yield learning curve and accelerating the mass production cycle, while also lowering production costs and enhancing customer profitability.



# QUALITY



- All production and quality data will undergo multidimensional, comprehensive statistical analysis and be displayed through the quality information management system. In addition to EL and flash tests, all cells and modules must pass a battery of tests to ensure that all product properties meet high standards before being released to customers. Our commitment to quality assurance is absolute and we strive for excellence in every aspect of our production process.



- All processes from raw material input to final inspection and qualification for shipment are monitored and recorded, with quality monitoring data saved and traceable through barcode labels on the products.



- All our products have been certified to the highest standards worldwide.

# SUCCESSFUL PROJECTS



**1MW** ↻  
Tianhua Industrial and Commercial Roof Project  
Suzhou, China



**1.8MW** ↻  
Industrial and commercial rooftop projects  
Wuxi, China



**6MW** ↻  
Distributed photovoltaic projects  
Wuxi, China



**5.5MW** ↻  
Liaocheng Roof Top project  
Shandong, China



**800KW** ↻  
Yifeng Distributed Photovoltaic Project  
Yangzhou, China



**55KW** ↻  
Natong Optical storage and Charging project  
Suzhou, China



**6MW** ↻  
Distributed Photovoltaic Project  
Yixing, China



**93.6KWP** 📍  
Swimming pool shed with Solar

Dhaka, Bengal



**213.2 KWP** 📍  
Grameen Caledonian College of Nursing

Dhaka, Bengal



**200 SETS** 📍📍  
Ground Mounted Solar Power  
Lenercom - Colombia

Chocó Region, Colombia

# GLOBAL PROJECTS



**15KWP** 📍  
American International University (AIUB)

Dhaka, Bengal



**60KWP** 📍  
Kohinoor chemical ltd

Dhaka, Bengal



**213.2 KWP** 📍  
Grameen Caledonian College of Nursing

Dhaka, Bengal

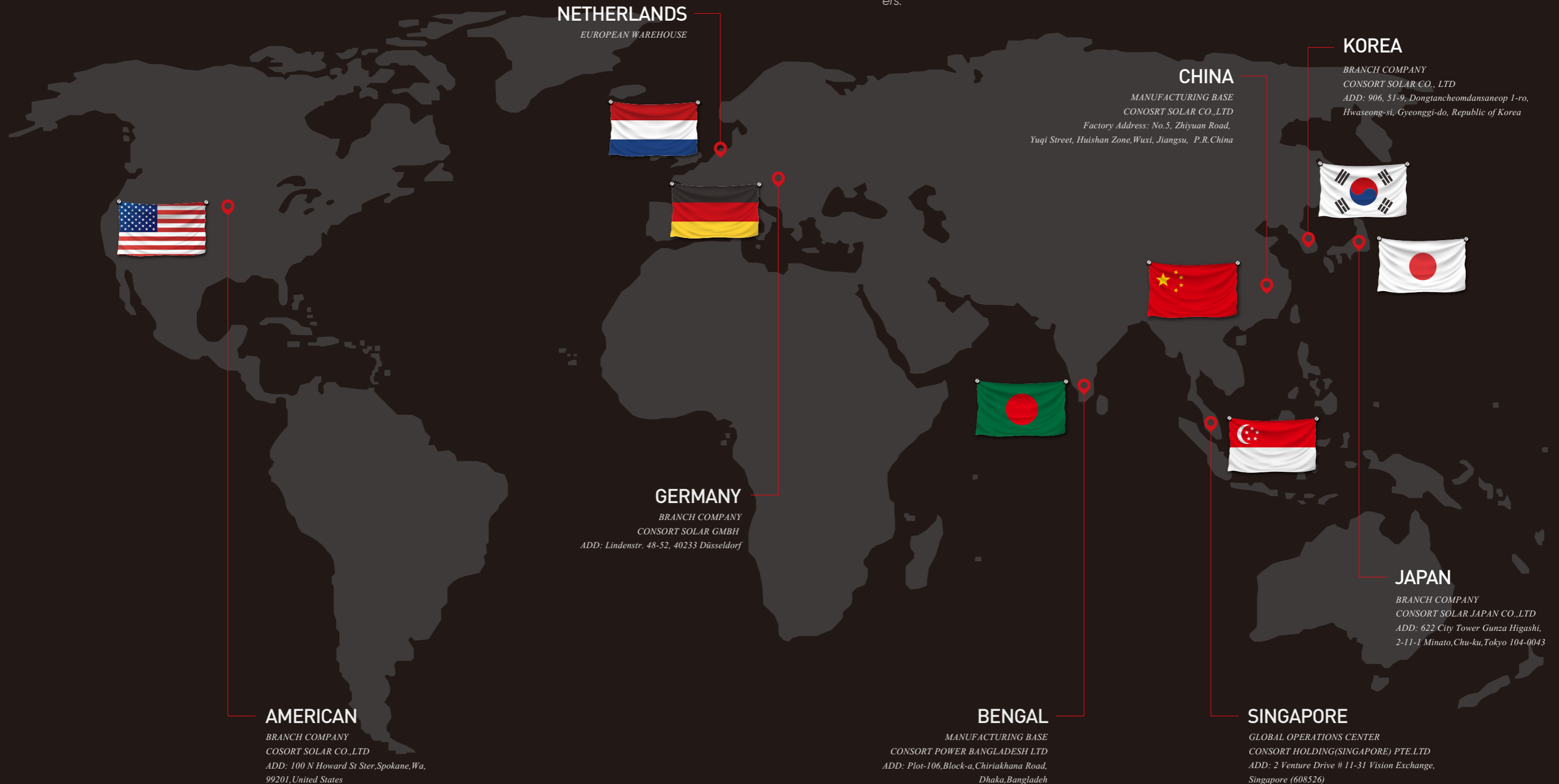
# STRATEGIC COOPERATION

## CUSTOMER SERVICE:

Consort Solar believes that excellent customer service is critical to increasing customer retention and loyalty, as well as helping to retain existing customers, attract new customers and strengthen relationships with customers. Consort Solar has a professional service team to provide customers with world-class, high quality, professional pre-sales technical service support, after-sales problem solutions, to provide customers with the superior experience.

## GLOBAL SERVICE NETWORK:

Consort exports to 25 countries and operates seven offices worldwide, demonstrating our unwavering commitment to expanding our global production, logistics, sales, and service network in order to fulfill the needs of our esteemed customers.



# GLOBAL PARTNERS

In addition to our specialized expertise in providing comprehensive solar energy solutions, we are proud to have established a global network of over 100 partners, the majority of which are well-known brands in the solar industry. This network allows us to leverage the expertise and resources of our partners to deliver top-quality products and services to our customers worldwide.



# FUTURE

## Consort Future Sustainability Strategy



### Sustainable Technology

*Adhere to independent research and development innovation, and constantly reduce the LCOE, to provide customers with reliable returns.*



### Sustainable Green

*We should aim for eco-friendly development, advance environmental restoration and climate action, and achieve sustainable human progress.*



### Sustainable Management

*Adhere to the steady and reliable, the balance between economic effect and social responsibility, the harmonious coexistence of enterprises and the environment, to make the world a better place.*



**CONSORT**  
S O L A R